



Roxtec S -läpivienti muoviputkille

Muoviputkien paloturvallinen läpivienti.

Muoviputkille tarkoitettu Roxtec S on läpivienti, joka hitsataan kiinni paloluokitusta edellyttävään rakenteeseen. Se tarjoaa suljetun ja turvallisen tilan lattiaan asennettaessa. Suorakaiteen muotoisen teräsrungon avulla tiheään kaapeloinnin omaavien putkien reititys onnistuu vaivatta. Muoviputkille tarkoitettut Roxtec RM PPS -tiivistysmoduulit on merkitty vastaavalla NW-kokonumerolla asennuksen helpottamiseksi. RM PPS -moduuleita voidaan yhdistää tavallisiin RM-moduuleihin, jolloin saadaan yhdistelmä putkia ja kaapeleita samassa kehyksessä.

- Helppo ylläpitää ja tarkistaa
- Sisäänrakennettu lisäkapasiteetti



Tuotteen ominaisuudet



Paloluokiteltu



IP/UL NEMA

Asennusrakenne



Metalli

Asennustyyppi



Hitsaus

Luokitukset ja sertifiointit

Paloluokka

- E/EI-luokitus standardin EN 45545 E60 mukaan

Tiiviys

- IP 66/67

Kehyksen mitat

mm/kg

Alla olevat kehysoikeudet ovat vain osa valikoimastamme. Kattava valikoima kehyksiä ja kokoonpanoja löytyy osoitteesta [roxtec.com](https://www.roxtec.com).

	Otsikko	Kehysaukot	Pakkaustila	Ulkomitat WxHxD	Aukon mitat w x h	Paino	Tuoteno
	S 6x1 ALU	1	120 x 180	140.5 x 238 x 60	143(+1/-1) x 240(+1/-1)	1.2	S006000000131
	S 6x1 PRIMED	1	120 x 180	140.5 x 238 x 60	143(+1/-1) x 240(+1/-1)	3.3	S006000000112
	S 6x1 AISI316	1	120 x 180	140.5 x 238 x 60	143(+1/-1) x 240(+1/-1)	3.3	S006000000121
	S 6x2 PRIMED	2	120 x 180	271 x 238 x 60	273(+1/-1) x 240(+1/-1)	5.5	S006000000212
	S 6x2 ALU	2	120 x 180	271 x 238 x 60	273(+1/-1) x 240(+1/-1)	1.9	S006000000231
	S 6x2 AISI316	2	120 x 180	271 x 238 x 60	273(+1/-1) x 240(+1/-1)	5.5	S006000000221
	S 6x3 PRIMED	3	120 x 180	401.5 x 238 x 60	404(+1/-1) x 240(+1/-1)	7.7	S006000000312
	S 6x3 AISI316	3	120 x 180	401.5 x 238 x 60	404(+1/-1) x 240(+1/-1)	7.7	S006000000321
	S 6x3 ALU	3	120 x 180	401.5 x 238 x 60	404(+1/-1) x 240(+1/-1)	2.6	S006000000331

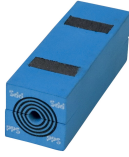


Tiivistyskomponenttien tiedot

Tiivistyskomponentit



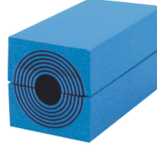
Roxtec-asennusrasva



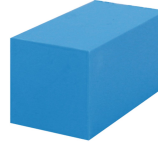
RM PPS -moduuli
Multidiameter™-teknologia
lla



Wedge ja Wedgekit



RM -moduuli
Multidiameter™-teknologia
lla



RM -umpimoduuli



Roxtec-hitsaustyökalut



Roxtec-välilevy

Lisätietoja on osoitteessa [roxtec.com](https://www.roxtec.com).

The product information provided by Roxtec does not release the purchaser of the Roxtec system, or part thereof, from the obligation to independently determine the suitability of the products for the intended process, installation and/or use.

Roxtec gives no guarantee for the Roxtec system or any part thereof and assumes no liability for any loss or damage whatsoever, whether direct, indirect, consequential, loss of profit or otherwise, occurred or caused by the Roxtec systems or installations containing components not manufactured by an authorized manufacturer and/or occurred or caused by the use of the Roxtec system in a manner or for an application other than for which the Roxtec system was designed or intended.

Roxtec expressly excludes any implied warranties of merchantability and fitness for a particular purpose and all other express or implied representations and warranties provided by statute or common law. User determines suitability of the Roxtec system for intended use and assumes all risk and liability in connection therewith. In no event shall Roxtec be liable for indirect, consequential, punitive, special, exemplary or incidental damages or losses.

The Roxtec products are offered and sold in accordance with the conditions of the Roxtec General Terms of Sales. The latest version of the Roxtec General Terms of Sales can be downloaded from <https://www.roxtec.com/en/about-us/about-roxtec/general-terms-of-sales/>

We reserve the right to make changes to the product and technical information without further notice. Any errors in print or entry are no claims for indemnity. The content of this publication is the property of Roxtec International AB and is protected by copyright.

This document was generated on: 2024-04-15